



Selected Practice Information

Cinema



Introduction

Burrell Foley Fischer LLP is acknowledged as a leader in modern cinema design and in particular in the development of a new breed of digital and urban cinemas. Our specialist knowledge of the film sector is underpinned by 30 years experience of working for independent cinema operators, regional film theatres and community arts cinemas. We have also designed cinema fit outs within larger commercial developments, working closely with the 'shell' architect for the development as a whole, and have provided strongly branded designs for cinema circuits. We have worked directly for Local Authorities and Development Agencies on site options appraisals and feasibility studies for cinema developments.

The Practice offers its specialist skills in designing buildings for cinema and media, the performing arts, and the repair, conservation and remodelling of historic buildings to other architectural and design practices working as specialist consultants. We have collaborated with other practices on a number of projects giving the ultimate Client the benefit of the expertise of individual parties in particular elements of their building. Recent collaborations include a feasibility study for the creation of an independent cinema and media training centre in Limerick Ireland, working as specialist consultant architects to a local firm of Architects, and working as a cinema architect within a team led by Nicholas Hare Architects on new facilities for the London Film School.

We have designed buildings for Clients across the public, private and subsidised sectors. We have worked on new build, refurbishment and building conservation commissions and have extensive experience and knowledge of working with existing building stock. The Practice has designed the first all digital cinema in the UK - Kino, Hawkhurst, award winning new build cinemas, such as Harbour Lights Southampton and Stratford Picturehouse, and has been responsible for the refurbishment and remodelling of existing cinemas such as Norwich Cinema City (Listed Grade 1) and the Cine Lumiere, London (Listed Grade II).

Recent and current projects include, The Depot Lewes, a 3 screen cinema with a cafe/bar restaurant and film education facilities, Newlyn Filmhouse, a 2 screen cinema with cafe bar in converted granite fish stores and Campbeltown Picture House, (Listed Grade A) entailing the conservation and upgrading of a historic auditorium and the addition of a second screen and new front and back of house accommodation.

Recent studies include a Site Options Appraisal for the development of the Regal, Stowmarket for Stowmarket Town Council.

Broadway, Nottingham's Media Centre

PROJECT

CLIENT

Broadway

LOCATION

Lacemarket
Conservation Area,
Nottingham

CONTRACT VALUE

£4m



Broadway was a phased development around a client in occupation of a building that started life as a Methodist Chapel and was converted into an Educational Cooperative Building in the 1950s. Facilities provided in early phases of development include a new cinema for film exhibition and conferences, a refurbished 1950s auditorium for film exhibition, edit suites for film and video production and training, and broadcast-standard studio, a café bar, front-of-house accommodation, administrative offices for Broadway and like-minded organisations, educational facilities, seminar rooms, and creative media start-up units.

The final phase of the centre's development provided two new screens and a multi-media lab that allows Broadway to exploit the potential of digital media. A glazed elevation opens up the frontage to communicate more effectively Broadway's engagement with film and media and provides improved foyer, social and conferencing spaces.

The project was awarded the Lord Mayor of Nottingham's Award for the best adaptation of an existing building 1997, a Renovation in Aluminium Award in 2007 and an Adapt Award 1998.





Scala Cinema and Arts Centre

PROJECT

CLIENT

Denbighshire
County Council

LOCATION

Prestatyn

COMPLETION DATE

2009

CONTRACT VALUE

£2.6m



The Scala Cinema & Arts Centre project will help to revitalise the town centre in Prestatyn and provides access once again to film on a site with strong local memories of cinema-going. It also provides access to new social and training facilities, exhibition spaces within the foyers, meeting and training rooms and a flexible multi-use auditorium suited not only to cinema exhibition but performing arts, dance and exercise classes, fairs and markets.

The integrity of the High Street frontage, which contributes to the character of the conservation area, has been reinstated through restoration, and further adapted to suit the building's new use. The ornate red brickwork arches, damaged by a 1960s panelled façade installation, were reinstated, whilst the first floor cills to the large window openings were cut down to the floor level to better reveal the new upstairs café. The café windows slide back fully behind new metal railings,

allowing the café to open up to the street and to enjoy the south west facing aspect. A new glass canopy forms a contemporary counterpoint to the Victorian façade. There is a high level of intervisibility through a large glazed screen between the street and the entrance foyer which is designed to be welcoming and accessible to all building users.

The auditoria are set back behind the small-scale High Street frontage and are housed in a plain, red brick rectangular shed, topped by a lightweight metal clad 'roof box' which houses the digital media suite. There is a dedicated 150 seat cinema and a 150 seat multi-use auditorium, both equipped with digital projectors. All facilities within the building are accessible to all building users. The project gained the following awards - RICS Awards Wales 2010: Community Benefit Award, Civic Trust Awards 2010: National Panel Recognition, CLAW Building of the Year Awards 2009: Commendation.



Stratford Picture House

PROJECT

CLIENT

Stratford Development Partnership

LOCATION

Stratford East,
London

COMPLETION DATE

1997

CONTRACT VALUE

£3.1m

"While the rest of Britain goes crazy for the bland multiplex, east London is now home to two picture houses which are also architectural masterpieces"

Independent - 5 October 1997



A new landmark development central to the urban regeneration strategy for Stratford East, providing within the context of a new public square and cultural quarter, a four-screen cinema with exhibition, café bar and restaurant facilities.

The project was completed in 1997 and was an FPDC National Winner for Leisure in 1998.



PROJECT

Harbour Lights

CLIENT
Southampton City
Council

LOCATION
Ocean Village,
Southampton

COMPLETION DATE
1995

CONTRACT VALUE
£1.2m

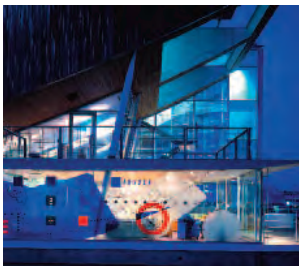
A landmark building located in the former P&O docks, provides two auditoria for film and video exhibition and conferences, an exhibition space, a café bar and education facilities.

The design celebrates the experience of cinema going, and being the antithesis of the black-box space, it provides a contrast to its multiplex rivals. The foyers, café bar and offices have an open aspect which fully exploit the centre's dockside location.

Harbour Lights is attributed with having had a leading influence on the design of a new generation of cinemas.

The building was shortlisted for The Sunday Times/Royal Fine Art Commission Building of the Year Award 1995 and gained a Civic Trust Commendation 1997.

The cinema is operated by Picturehouse.



Kino, Hawkhurst

PROJECT

CLIENT

Kino Holdings

LOCATION

Hawkhurst, Kent

COMPLETION DATE

2005

CONTRACT VALUE

Approx £200,000



Kino Hawkhurst is the first all digital screen in the UK. The design addresses the challenge of providing a stylish and comfortable environment for enjoying film within the constraints of a listed church hall and a phenomenology tight budget. The auditorium is an insertion within the church hall and has been detailed to address the acoustic and technical requirements of a cinema without damage to the original fabric of the building. If the cinema ceased to operate within the hall, it could be stripped out to reveal the original painted timber boarded ceiling and walls, elaborately detailed window frames and reveals and timber trusses.

The technical requirements of the brief to accommodate acoustic absorption, house and emergency lighting and a surround sound installation have been used to create a striking interior based on an interpretation of a Paul Klee painting. While evoking the identity of an art house the cinema has proved popular with cinema goers of all ages including teenage audiences. A café bar and landscaped courtyard has also been provided. The design of front of house areas, while respecting the character of the building carries through the colour palette used in the auditorium. The gridded design for the cinema has been adopted as the Kino logo.

University of Limerick Cinema

PROJECT

CLIENT

University of Limerick

LOCATION

Limerick

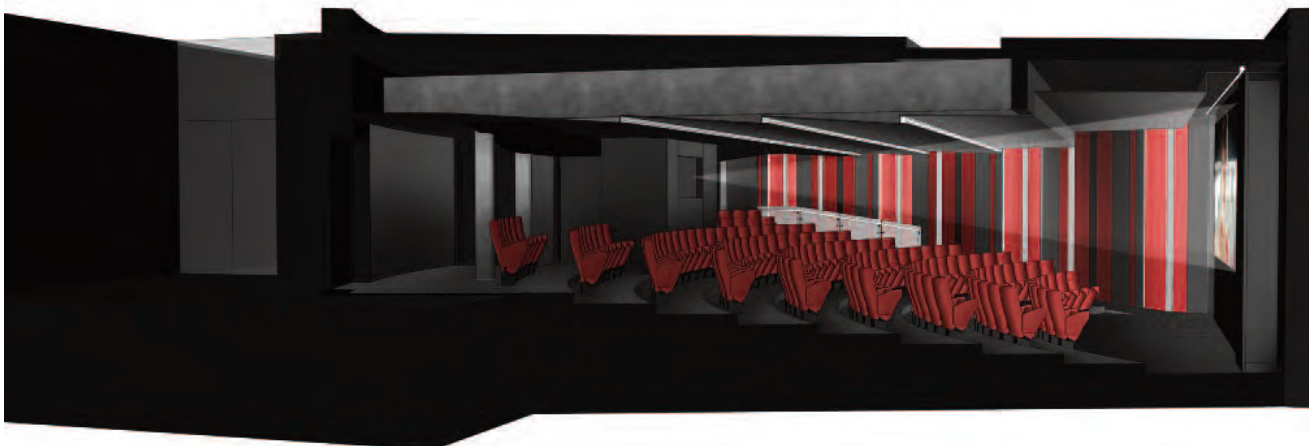
COMPLETION DATE

2009



A Feasibility Study was conducted for the University of Limerick to consider in detail the feasibility of providing a dual use lecture theatre and public digital cinema in the ground floor lecture theatre of the Computer Sciences Building, the issues raised by the proposals, the estimated total construction cost and total project cost, and the draft programme.

The project did not proceed as the client's pre-conceptions, prior to commissioning the study, on capital cost and loss of teaching time, compatible with a viable cinema operation, were not borne out by the findings of the study.



The Picture House Campbeltown

Listed Grade A

PROJECT

CLIENT

Campbeltown
Community Business Ltd

LOCATION

Campbeltown,
Scotland

CONTRACT VALUE

£2m



The refurbishment and redevelopment of the Picture House, Campbeltown, on the West Coast of Scotland will secure the future of both a community owned and run cinema and an important historic building.

The Picture House was established in 1913 and is the oldest purpose built cinema in Scotland still showing films. The "Centenary Project" will breathe new life into its building, which is Listed Grade A. The unique interior will be refurbished to bring it up to the standards expected of a modern cinema going audience, whilst respecting the historic building in which it is housed. Enhanced front of house facilities will be provided and a second cinema auditorium.

BFF worked, with the cinema's owners and operators, on an initial scheme design that contributed to a successful first stage bid to the Heritage Lottery Fund. Following a competitive process, we were appointed to lead the design work for the refurbishment project.

Through our long association with many independent cinemas throughout the UK, BFF are very aware of the importance of these venues to their local communities and we are delighted to be able to contribute to the future of such an historically significant and much loved cinema.



The Picture House Campbeltown

Listed Grade A

PROJECT

CLIENT

Campbeltown
Community Business
Ltd

LOCATION

Campbeltown,
Scotland

CONTRACT VALUE

£2m



Newlyn Filmhouse

PROJECT

CLIENT

Newlyn Filmhouse Ltd

LOCATION

Newlyn,
Cornwall



The Newlyn Filmhouse provides a new two-screen cultural cinema with a café bar in a former fish store on the Coombe in Newlyn, Cornwall. Burrell Foley Fischer worked closely with the owners to find a suitable site in the area for their vision.

Externally the conversion makes use of existing large shuttered openings at ground and first floor level and retains the character and appearance of the building as a former light industrial building. The design takes inspiration from the venue's coastal location, whilst providing state-of-the-art digital projection facilities and comfortable seats.

The film programme includes a wide range of independent and world films, documentaries, archive films and cultural activities, including live streamed events such as plays, opera, dance and exhibition

openings. The Filmhouse compliments and enhance the existing cultural and commercial enterprises in the town, including the Newlyn Gallery and the Newlyn Art School.



Norwich Cinema City

Listed Grade I

PROJECT

CLIENT

Norfolk and Norwich
Film Theatre Ltd

LOCATION

Norwich

CONTRACT VALUE

£2.35m

The re-modelling of Norwich Cinema City, the Regional Film Theatre for Norwich and Norfolk, has secured its future by developing it from a single-screen to a three screen venue. The new screens are equipped with digital technology.

The cinema occupies a converted medieval hall house that was extended in the 1920s by Boardman, a notable local architect, to create an assembly hall on the footprint of the garden to the house. This was converted into a single screen when Norwich Cinema City occupied the building in the 1970s. The challenge has been to provide three screens on the footprint of the single screen in a manner that respects the historic significance and setting of the medieval building. Excavation has created space for the additional screens below a main screen similar in size and capacity to the previous single screen.



The refurbished café bar and restaurant in the medieval hall open out onto a courtyard which provides an oasis of calm in the city centre. The project was awarded the Best Disability Adaptation in the Local Authority Building Control Awards 2008 and the Norwich Society "Sir Bernard Fielden Award" 2009 for excellence in alterations and restoration of a historical building.



Depot Cinema, Lewes

"The type and range of uses and the quality and flexibility of internal and external spaces will add to the town's vibrancy as a cultural destination."

Design Officer, South Downs National Park Authority

PROJECT

CLIENT

Lewes Community Screen

LOCATION

Lewes, East Sussex

CONTRACT VALUE

£6.2m



The Depot is a new community cinema for the town of Lewes, in East Sussex, built on the site of the old Harvey's Brewery depot. It shows feature and independent arthouse films, as well as hosting events, exhibitions and festivals, and provides facilities for film education and community activities. A café/bar and restaurant allow filmgoers to enjoy a drink or a bite to eat.

The original building is a familiar landmark in a prominent location close to Lewes railway station. The site lies within Lewes Conservation Area and is surrounded by many listed buildings of a variety of architectural styles and ages. While not in itself of very high architectural value, the original building is an important part of the story of the town's development and makes a positive contribution to the character and appearance of this conservation area. Constructed as a utilitarian brick Post Office sorting office, it later became part of the Harvey's Brewery. The building and site were in various states of use and dereliction. There were clear opportunities to adapt the building and enhance its prominent setting within the town, without losing its history.



Burrell Foley Fischer were commissioned by Lewes Community Screen, who built and operate the new venue, to design the cinema. The existing warehouse building was retained and the three screens (140, 129 and 37 seats) inserted within it.

A new glazed extension houses the box office, café/bar, restaurant, and film education and training facilities, giving a contemporary setting to the former industrial building in a prominent location close to the town's railway station. The former tarmacked service



yard is landscaped to provide a new public realm, and includes native plant species providing seasonal colour and a small orchard and wild flower meadow, reflecting the historic site layout of orchards and meadows.

The Depot is a privately funded philanthropic project, delivered without any draw on public funding. It is an exemplar of local flint craftsmanship. Given the topography of Lewes and the Downs, particular thought has been given to the design of the roofscape, as a fifth elevation, featuring flint paving and a green roof planted with chalk loving plants, found in SDNP. There was extensive consultation with local access groups

over providing a welcoming and accessible facility.

Screen 1 has a small stage and the technical infrastructure for small scale comedy acts and music performances and live music events are held in the café/bar. Screen 3 is available for private screenings and events and benefits from its own small bar/lounge. There are facilities for film education, including a small film library and study space, and a multi-use room with a flat floor that is used for a range of training and workshop events. The extensive external landscaping incorporates facilities for outdoor screenings and events.



Cine Lumiere

Listed Grade II

PROJECT

CLIENT

Institut Francais

LOCATION

Kensington, London

COMPLETION DATE

2009

CONTRACT VALUE

£300,000

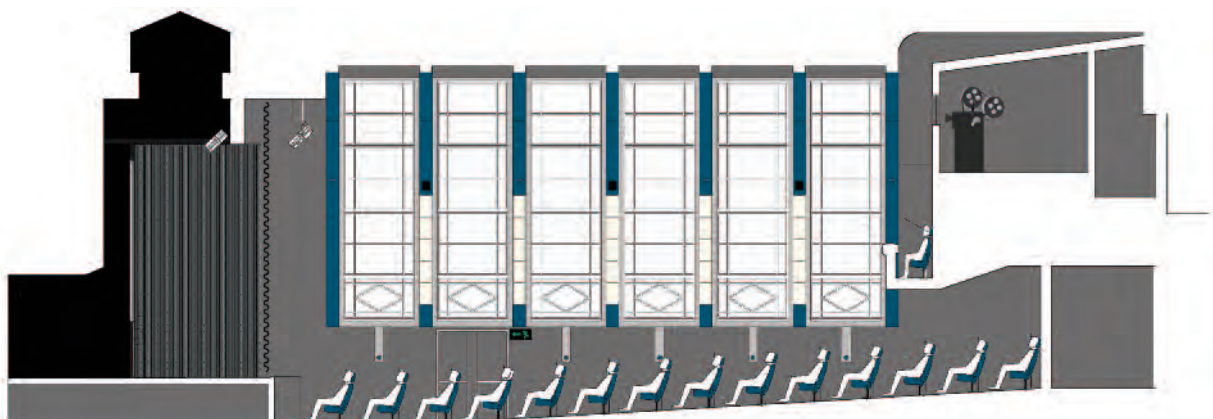
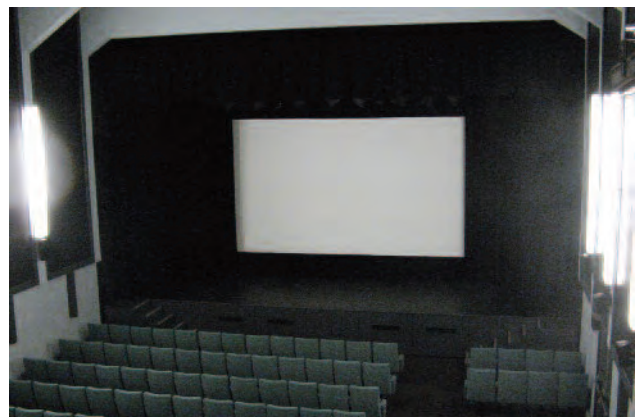
The Refurbishment of the 228 seat Art Deco Cine Lumiere at the Institut Francais in South Kensington, London was completed in 2009. The project restores the character and quality of the Art Deco interior whilst ensuring it is up to date in terms of projection and sound technology, comfort and operational flexibility.

The re-siting and enlargement of the projection box so that it is centered on the auditorium has eliminated previous image distortion on the screen and provided space for digital projection facilities alongside the venue's 35mm and 16mm projectors. Comfort levels have been significantly increased with seat tier widths increased to 1200mm and new Quinette seats installed.

Improvements to the heating and ventilation system has facilitated the removal of the radiators that were covering the Art Deco windows. Secondary glazing has been added, to reduce the noise intrusion from the adjoining Lycee Francais playground, but with glazing bars matching the primary glazing the magnificence of the windows can once again be enjoyed when the black out blinds are retracted.

A platform lift was installed providing disabled access from the entrance foyer to the Cine Lumiere and adjoining library and a new disabled toilet has been provided to the rear of the stalls.

The cinema was reopened by Catherine Deneuve in January 2009.



PROJECT

Rio Cinema

Listed Grade II

CLIENT
Rio Cinema

LOCATION
Dalston, London

COMPLETION DATE
1999

CONTRACT VALUE
£650,000



The cinema was designed by George Coles of Adams and Coles in 1913 and altered by F.E. Bromige in the 1930s. At this time an Art Deco shell was created within the existing interior, reducing the size of the auditorium. While continuing to operate as a successful local cinema, by the 1990s the building was in need of a comprehensive overhaul. Burrell Foley Fischer LLP was appointed to refurbish the Rio Cinema following its involvement in the initial feasibility stage in 1994. The project progressed after the Arts Council of England Lottery Fund Award was granted in February 1998.

The auditorium is provided with state of the art audio-visual technology and comfortable new stalls seating within the renovated and restored Art Deco shell. The box office and bar counters are designed to appear as modern insertions within the existing building fabric. Improved wheelchair access was implemented throughout with lift access to training and meeting room spaces at basement level. External and internal illuminated signage and neon strips accentuate the fluted features and vertical bands of the original façade giving the cinema a strong night presence.



Stefanie Fischer

MA Dip Arch (Cantab) RIBA FRSA

Principal 1985 - 2015

Consultant 2015 onwards



Stefanie Fischer is an Architect with specialist knowledge of the design of facilities for film and media. She also has experience of working on historic buildings including projects for Institutional clients. She has worked on a wide range of residential and regeneration projects for private and public-sector clients. Community consultation is an important part of her work and she shares her expertise by participating at conferences, teaching, serving on advisory bodies and engaging with architectural education as an external examiner. She brings strong management skills to all her projects.

Stefanie has provided consultancy services to the BFI and former UK Film Council and London Film and Development Agency and has worked on a range of projects from feasibility study stage to completed schemes. She organised and participated in the BFI Cinema Technical Design Convention on cinema design held in Nottingham in 1996 and was a speaker at 'Future Frame' conference organised by Public Art Forum and BFI at the Luax Cinema in 1998. She also spoke at the Cinemas in the Community Conference in 1999. In 2011, Stefanie gave evidence to the All Party Parliamentary Group for Young Disabled People, on good and poor practice regarding access for all to cinemas.

Stefanie's cinema and media projects have included Metro Cinemas (Metro Tartan); Renoir Cinema (Artificial Eye); Picture House, Exeter; the Rio, Dalston (Listed Grade II); Broadway, Nottingham's Media Centre; Norwich Cinema City (Listed Grade I); the Cine Lumiere (Listed Grade II) at the Institut Francais in South Kensington; Kino Hawkhurst, the first all digital cinema in the UK; Scala Cinema and Arts Centre, Prestatyn; and cinema consultancy services on the Birks Aberfeldy. She was the cinema architect for the London Film School's proposed move from Covent Garden to Barbican Hall 1.

Her current projects include, The Depot, Lewes, a new three screen community cinema being created from a refurbished and extended former brewery depot building; The Newlyn Filmhouse, a new two screen independent cinema being created in a former fish store; The Picture House Campbeltown, the refurbishment of a (Listed Grade A) cinema together with a new build extension to provide a second screen.



Cinema Projects

Broadway, Nottingham's Media Centre
Cine Lumiere, Institut Francais, Kensington
Derby Quad (competition entry)
Harbour Lights, Southampton
Kino, Hawkhurst, Kent
Limerick University (feasibility study)
Lux Cinema, Hoxton
Metro Cinema, Piccadilly
Norwich Cinema City
Picturehouse, Exeter
Renoir Cinema, London
Rio Cinema, Dalston, London
Royal Digital Cinema and Media Training Hub, Limerick (pre-feasibility and feasibility study)
Scala Cinema and Arts Centre, Prestatyn
Stratford Picturehouse
Pioneerium, Hayle (feasibility study)
Birks Cinema, Aberfeldy (cinema consultant)
Mailbox (design for a cinema fit out within a large mixed use development including retail, restaurants and hotels)
London Film School (cinema consultant for proposed move to Barbican Hall 1)
Newlyn Filmhouse
Depot, Lewes
Regal, Stowmarket (site options appraisal)
Campbeltown Picture House



BURRELL | FOLEY | FISCHER
ARCHITECTS AND URBAN DESIGNERS

Burrell Foley Fischer LLP
E: mail@bff-architects.co.uk

www.bff-architects.com